

2025



Purpose & Impact

Charity No. 1189569

Content

Thank you	3
Our purpose	4
3 Pillars of activity	5
Who are we?	6
Volunteers in action	7
2025 at a glance	8
Conserving resources	9
Sustainable food	11
Restoring biodiversity	15
Ripple effect	22
Corporate sponsors	23
2026 & Beyond	34
What they say	35
Work with us	38
How you can help	40
Grant supporters	41
Collaborators	42
Media Outreach	43
Contact us	44



thank you

"Thank you to our generous trusts, foundations, corporate collaborators, community partners and volunteers for your vital support. Your contributions enable our environmental education charity to reach communities, inspire learning, and empower people to care for the natural world. We couldn't achieve this impact without you".

From Carrie and our Board of Trustees

Our purpose

To build a network of people working together to promote lifestyle changes that reduce resource consumption, the carbon footprint and negative ecological impact on the planet.

3 Pillars of Activity



Who are we?

We are 2 FTE Employees

We are 1 Contracted Grant Writer

We are 7 Trustees

We are the Horsham Repair Cafe!

We have a team of 7 environmental education contractors

We are the SGL Horsham District Wombles with recycling volunteers in 20 villages/towns

We are a team of about 100 volunteers

We have worked with 42 corporate partners in 2025

We have received funding from 21 trusts/foundations/councils in 2025



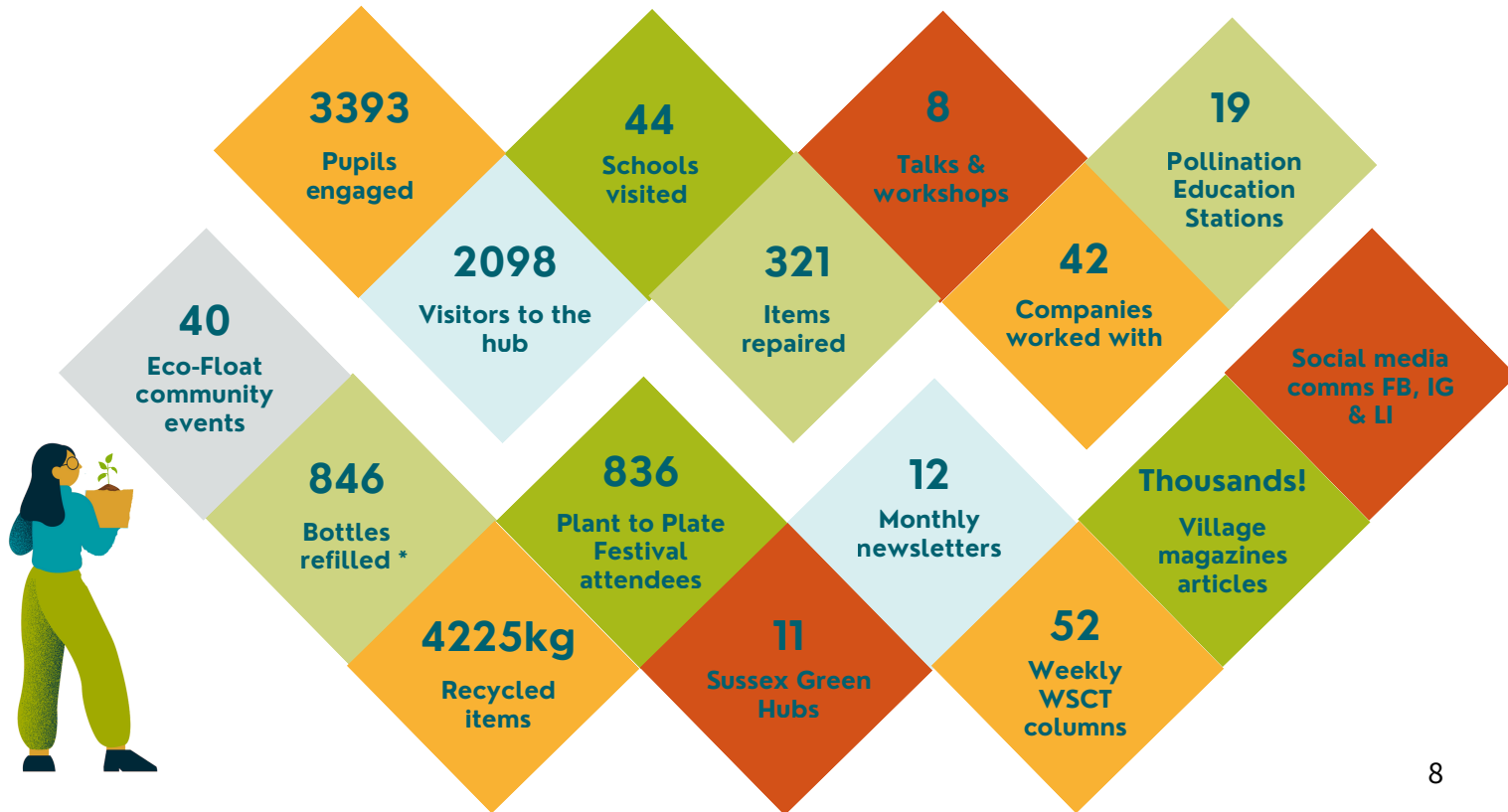
Volunteers in Action

“I volunteer with Sussex Green Living co-ordinating recycling drop-off points across 20 villages and towns because I am so upset about the amount of waste and what it is doing to our world. I want to educate people to think about where the waste goes when they discard it and maybe to choose better options rather than buying items that are plastic or hard to recycle”



JOY CARTER RECEIVED THE
OUTSTANDING CONTRIBUTION
AWARD AT THE HORSHAM
VOLUNTEER AWARDS 2025

2025 at a glance



*Plus 180 dry concentrated cleaning products - replacing lots of plastic bottles!

Conserving Resources

Conserving resources sits at the heart of everything Sussex Green Living does and nowhere is this more visible than at the Sussex Green Hub. The Hub brings together people, skills and ideas for living well within planetary limits. Each month, visitors come to get broken items repaired, refill household product bottles and drop off hard-to-recycle materials. It is a space for learning, connection and action.

This collaborative approach has been shaped by strong partnerships with Transition Horsham, Horsham Eco Churches and the Horsham Community Fridge, and it continues to ripple outwards. New repair cafés and community hubs have formed across Sussex, many of which have been supported and mentored by Sussex Green Living. Together they help residents make sense of changing recycling rules, discover refill options and learn the value of repair. The success of events like the Plant to Plate Festival show how these ideas can reach new audiences and connect everyday life with resource conservation.

Looking ahead, our ambition is to widen this network and inspire further behaviour change. In 2025, we secured National Lottery funding to deliver outreach activities and family events at the Sussex Green Hub throughout 2026, extending its reach to people who may not yet feel part of the environmental movement - plus funding a feasibility study for a Library of Things. By sharing what we learn, continuing to collaborate with partners and amplifying our shared work, we aim to make repair, refill and recycling part of daily life across Sussex.



SUSSEX GREEN HUB- LAST SATURDAY OF
EVERY MONTH IN HORSHAM

Sustainable Food

Early in 2025, sustainable food become our focal point with a new food festival and the development of our first dry food refill service.

Thanks to a Waste Prevention Community Grant awarded by West Sussex County Council and Biffa we launched the dry food refill service at Chanctonbury Leisure Centre in Storrington. This built on a household cleaning product bottle refill service which we installed in the Leisure Centre in 2023 with a Horsham District Council grant.

The aim was simple, to make waste free shopping easy and affordable for local residents. The refill station offers dry goods such as cereals, porridge oats, pasta and rice, helping households reduce single-use packaging while saving money. It sits alongside the existing liquid refill station, creating a practical hub for everyday low waste living.

On 26th November, we handed the service over to the Leisure Centre to run with local volunteers and supported by community promotion through schools and parish partners. We are now producing a practical guide, similar to our Repair Café guide, to help others set up refill services in their own communities. Our ambition is to spark the growth of pop up refill services across the county, especially in places that do not yet have access to one.



NEW 2025 DRY FOOD REFILL SERVICE IN
CHANCTONBURY LEISURE CENTRE, STORRINGTON

Plant to Plate Festival

2025 was the first year we ran this event thanks to a generous individual donor, local businesses, a team of volunteers, plus the support of Horsham District Council. Over 800 people were drawn to the Plant to Plate Festival in Horsham Town Centre for a day of family fun focused on healthier food for healthy people and healthy planet.

The event centred on themes of eating healthy real food, avoiding food waste, buying local produce, growing your own food, soil health, protecting pollinators and the importance of composting.

“This was a fantastic event with lots of ideas for living a sustainable life. Really good atmosphere and great energy. It was a very inspiring event”

NICKY, HORSHAM



Plant to Plate Festival

(4 locations)



We're reaching out to local businesses who care about our community, our environment, and the future of good, sustainable food. Your support can help nurture the people, places, and food systems that keep Sussex thriving. If you'd like to be part of something meaningful and locally rooted, we'd love to talk.

Restoring Biodiversity

Across Sussex, large-scale nature recovery projects are taking shape, from Horsham Green Spaces Wildways and Wilder Horsham District to the Weald to Waves corridor linking the High Weald to the coast. Together these initiatives are redefining how we think about land, water and wildlife. But lasting change also depends on what happens closer to home, in the places where people learn, work and live.

This is where Sussex Green Living's Pollination Education Stations (PES) come in. In autumn, our charity celebrated the installation of its 36th PES. These have been funded by businesses, grants, churches, parish councils, schools and the Rotary. Located outside businesses, parks, church and school grounds this trail is continuing to grow. We are looking for sponsors and locations for 2026 installations.

Each station combines planting, shelter and water to support pollinators such as bees, butterflies, beetles and moths - plus an A2 educational sign sharing action and signposting to the solutions page on our website. School or community installation events enable us to share knowledge, often through school assemblies and lessons.







PES installations act as living classrooms where learning and restoration go hand in hand. They help pupils see what works, what grows and what attracts insects. More importantly, they build confidence and curiosity, empowering young people to talk about biodiversity and act on it. The learning does not stop at school gates. Children take ideas home, helping to rewild gardens and influence family habits.

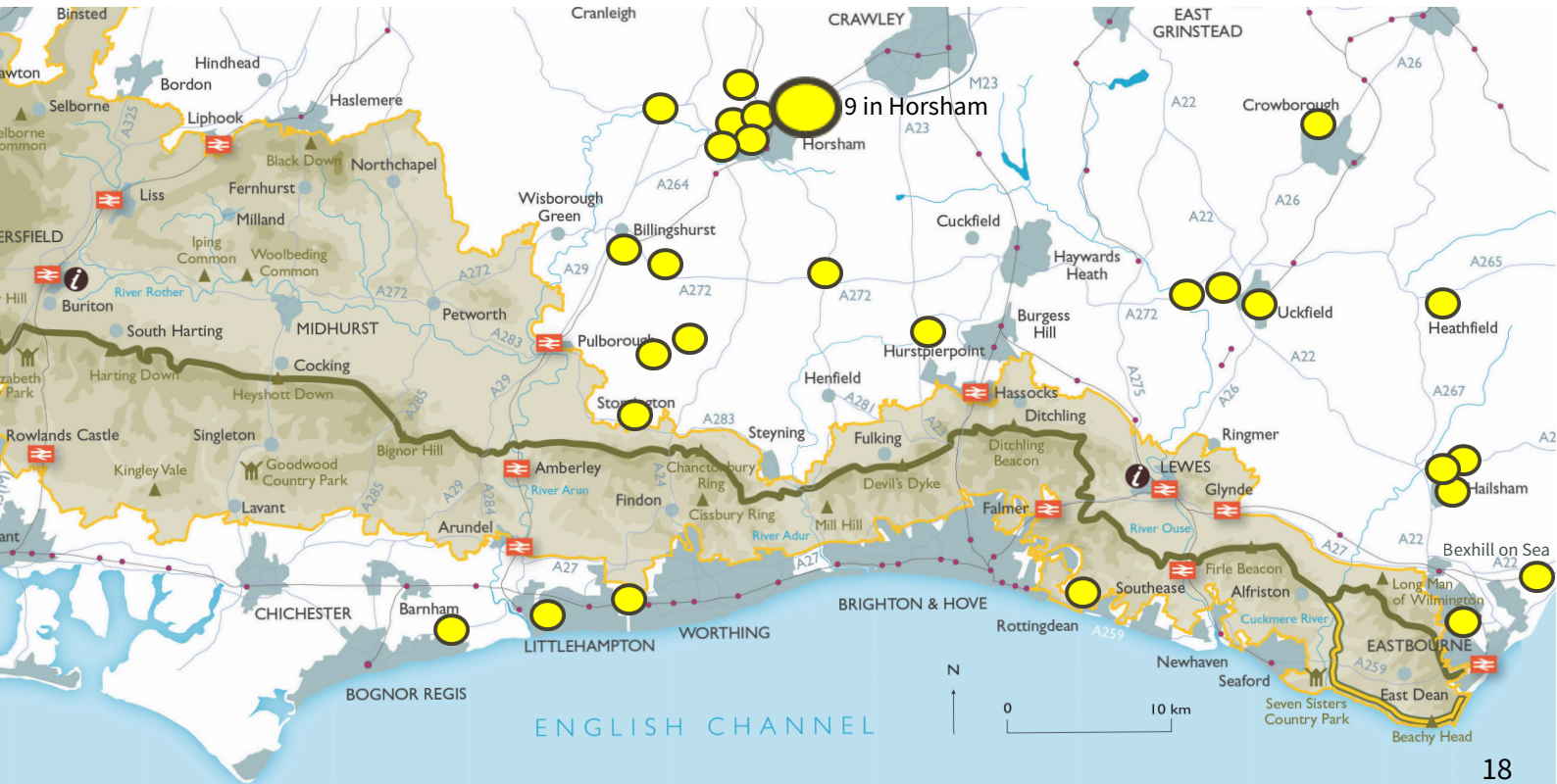
Projects like the PES trail complement wider landscape-scale Re Naturing Sussex efforts such as Weald to Waves, the South Downs National Park, Sussex Bay, Sussex Wildlife Trust and more local to our HQ Knepp Estate, Horsham Green Spaces Wildways and Wilder Horsham District, showing how community-level engagement supports nature recovery across the county. Each new installation adds another link in a growing chain of thriving habitats, helping people see that local choices contribute to a healthier, more connected environment.

We thank Greenwood Plants for donating the plants for our PES and sponsoring the A2 educational plaques.

greenwood

Restoring Biodiversity

Pollination Education Station Trail across East and West Sussex showing the South Downs National Park

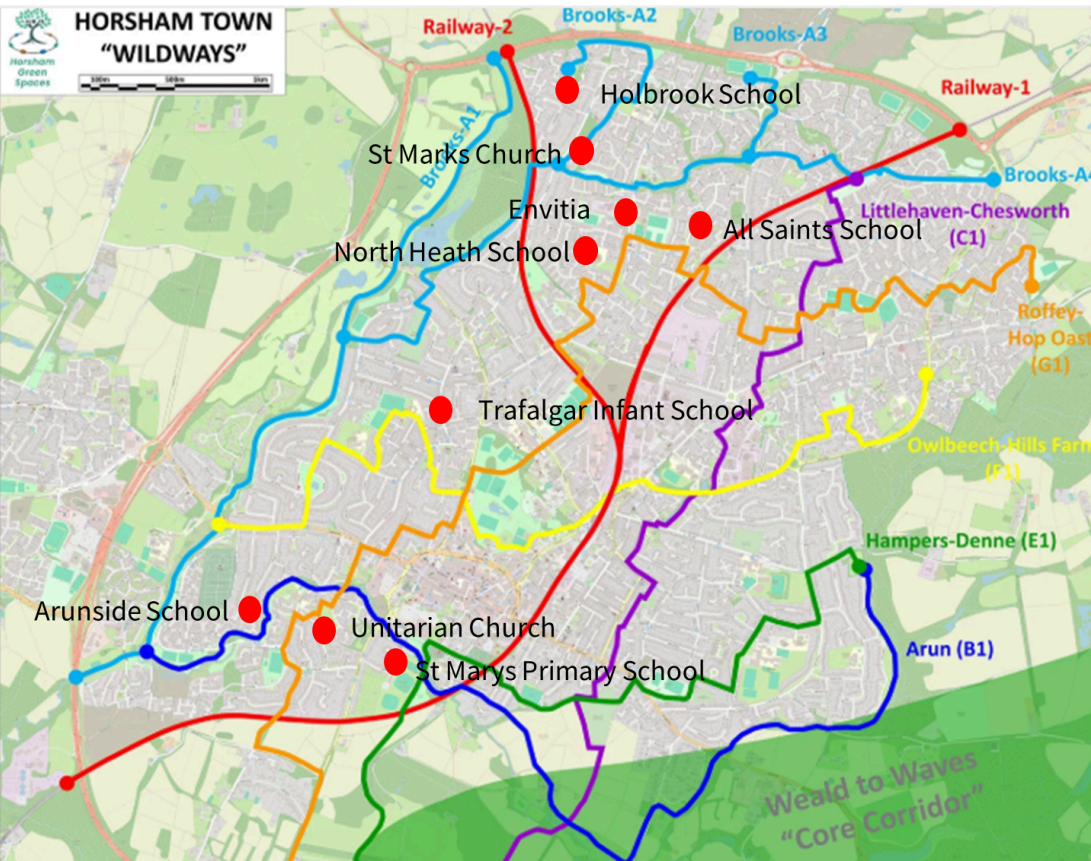


Restoring Biodiversity

Weald to Waves is a 100-mile nature recovery corridor across Sussex, aimed at connecting fragmented landscapes to boost biodiversity, capture carbon, enhance food production, and enrich the rural economy. Our Pollination Education Station Trail helps raise awareness and encourage action, helping to join up the dots! Learn more www.wealdtowaves.co.uk/nature



Restoring Biodiversity



● Shows the locations of our Pollination Education Stations on the Horsham Green Spaces "wildways," which connect green spaces across the Horsham town to create a Nature Recovery Network. This project is part of the larger Wilder Horsham District initiative and Weald to Waves.

www.horshamgreenspaces.org



STORRINGTON PRIMARY SCHOOL. COUNCILLOR CLAUDIA FISHER (DISTRICT AND PARISH COUNCILLOR) AND RICHARD NICHOLS FROM STORRINGTON & PULBOROUGH DISTRICT ROTARY ATTENDED THE ASSEMBLY AND MATCH FUNDED A POLLINATION EDUCATION STATION WHICH WE INSTALLED ON THE SAME DAY AS THE FUNDED ASSEMBLY.

The ripple effect

Repair Cafes

As the recycling network grew, other communities followed suit. Repair Cafes began to spring up in nearby villages, many guided in their early stages by Sussex Green Living.

Horsham Repair Cafe opened

Launched the first ever West Sussex Repair Cafe at the Quaker Meeting House.

1st hard-to-recycle village drop-off points created

Started in Billingshurst, Coolham and Horsham.

More hard-to-recycle village drop-off points created

Thanks to more volunteers signing up to work with us.

Cue Eco-Float

We purchased and retrofitted a 1974 milk float as an outdoor classroom and event stall.

Sussex Green Hub

Opened the Sussex Green Hub in Horsham combining refills, recycling, repairs in collaboration with Transition Horsham, Horsham Eco Churches & Horsham Community Fridge.

More local environmental groups formed

Recycling points became the starting point for new local environmental groups across many villages and towns.

Became a charity

Launched GBN & PES

Green Business Network and Pollination Education Station Trail

Mini Green Hubs open

We supported the launch of Arundel Green Hub, Amberley Eco Hub and Partridge Green Repair Cafe. Plus set up a new cleaning product bottle refill service in Chanctonbury Leisure Centre, Storrington.

Dry food Refill Service created

We helped Chanctonbury Leisure centre expand its offer with the help of a WSCC grant.

Library of Things

Secured a National Lottery Grant to expand engagement and in 2026 carry out a feasibility study for a Library of Things.

2019

2020

2021

2024

2023

2025

2026

Corporate Sponsors

Wates Developments

Thanks to support from Wates Development, Sussex Green Living has worked with ten schools across Horsham District in 2025, delivering assemblies and workshops.

Eight schools benefited from The Journey of a Banana assembly followed by a workshop. A fun, inspiring hands-on exploration of where food comes from, how far it travels, and what happens to it when it's wasted. Helping pupils understand the links between food, soil and biodiversity. They took part in three practical activities:

- tracing fruit and vegetables around the world, learning what grows where, in which season and what they can grow organically at home,
- investigated the tiny decomposers that turn waste into life, and
- sorted materials to discover what can and can't be home-composted.

The other two schools explored Plastic Free World, connecting plastic pollution with local solutions such as a new dry-food refill service we are setting up with a WSCC grant at Chanctonbury Leisure Centre. These sessions gave Sussex Green Living a way to link education with community action, showing pupils that their choices, what they eat, buy and throw away matters.

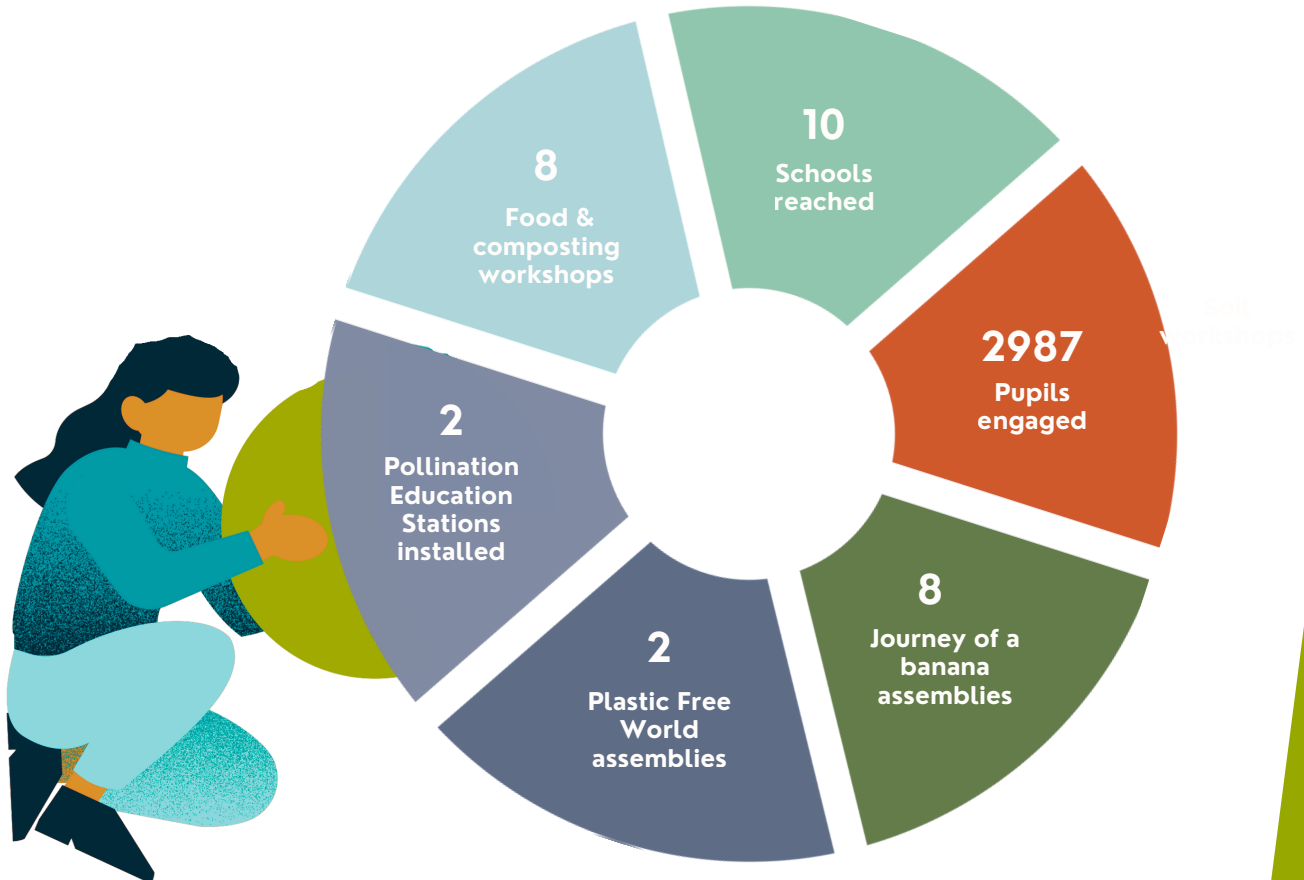
Wates Developments

Each funded session was carefully designed to turn information into inspiration. Assemblies opened space for children to talk about climate change, waste and wildlife in ways that felt practical, not overwhelming. In the workshops, composting brought these ideas to life, showing that soil isn't mud but a living system, full of unseen creatures working together.

Understanding that biodiversity starts with soil gave pupils a new sense of agency. They could see that by composting food waste or choosing what they eat, they're part of the solution. Teachers told us these sessions rebooted eco councils, sparked new school projects, from new compost bins to planting for pollinators.

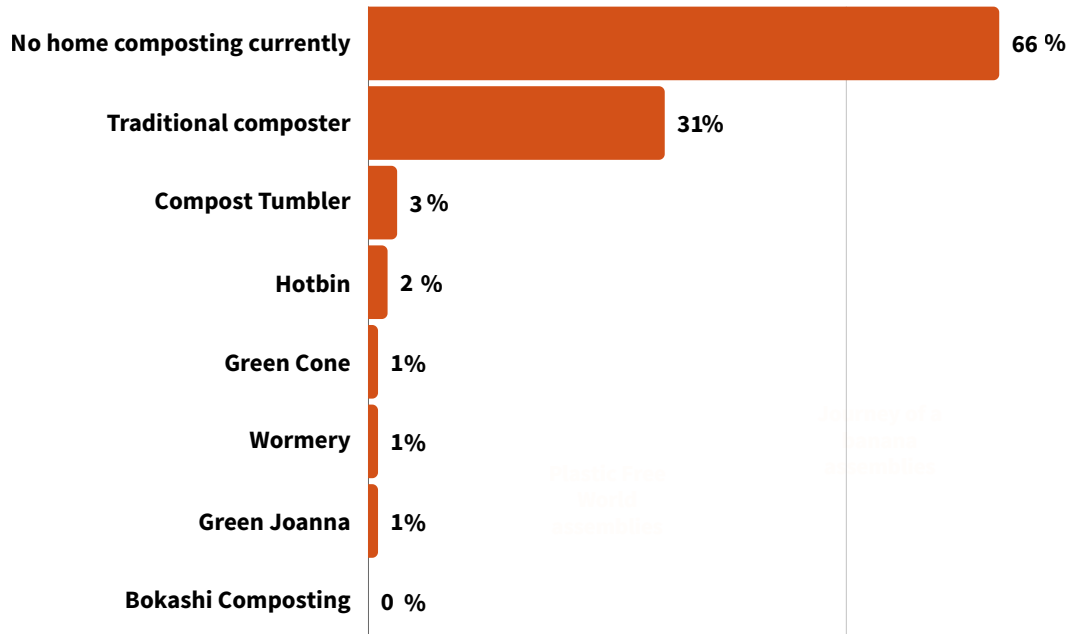
The programme also connected schools with the wider community. At Storrington Primary, for example, the assembly on Plastic Free World inspired local collaboration. Parish councillors and the Rotary Club joined pupils for the assembly, funded and helped pupils install a Pollination Education Station (PES). Thus creating a living classroom where children can now observe bees and butterflies close-up and an educational sign to inspire action.

Wates Developments



Wates Developments

In spring 2026, mandatory separate food waste collections will be introduced by every local council in England. Our aim is to encourage waste reduction and promote home composting of unavoidable food waste. Prior to delivering the Wates funded sessions we asked 8 schools to survey their families. 288 “How do you compost at home?” surveys were completed with these results:



Barratt Homes



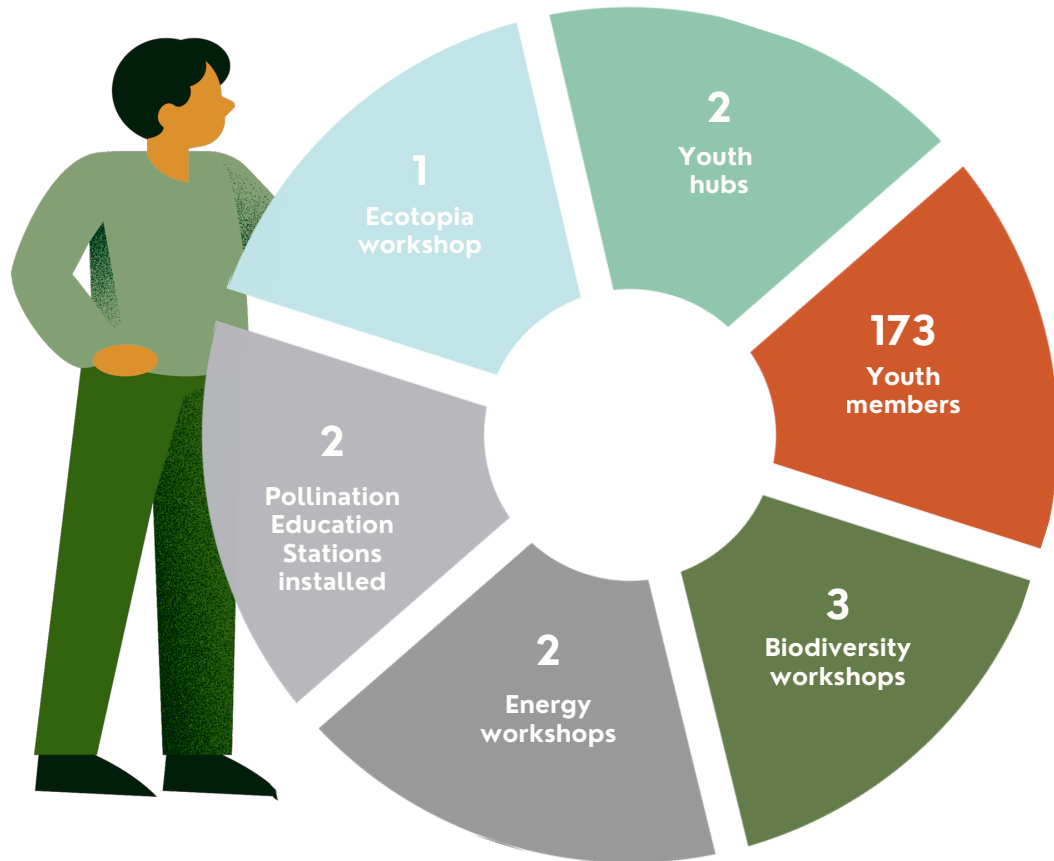


COMMUNITY POLLINATION EDUCATION STATION INSTALLATION
ON BARRATT HOMES DEVELOPMENT



GARDENING FOR PEOPLE AND WILDLIFE
WORKSHOP WITH RESIDENTS

Morgan Sindall Construction



Morgan Sindall Construction



ECOLOGY WORKSHOP AND POLLINATION EDUCATION STATION
INSTALLATION AT THE NEW JOFF YOUTH HUB IN PEACEHAVEN

Morgan Sindall Construction



BIODIVERSITY SESSION WITH HEATHFIELD YOUTH HUB
MEMBERS IN MILLENNIUM GREEN, ANCIENT WOODLAND



WORKING WITH YOUNG CHANGEMAKERS

2026 and beyond

Assemblies/
workshops
in 45 schools
yearly

Increase
reach by
improving
website

Follow on
food event
from Plant
to Plate

More Pop-
up Refill
services

Deliver
engaging
outreach
events with
Eco-Float

20+
Pollination
Education
Stations
yearly

Sustainable
Food

Feasibility
study for
Library of
Things

New Sussex
Laundry
Challenge

Create new
Youth
Engagement
post

Restoring
biodiversity

Conserving
resources

Increasing
young visitors at
hub and other
events

Expand our
reach with
village
magazines

Continue
existing
repair, refill
& recycling

Expand our
Green
Business
Network

What they say



“As a mum who volunteers with Sussex Green Living, I loved seeing the impact their pollinator talk had on my five-year-old. She came home determined to help butterflies and insisted we add our garden to the wildlife map. We planted a buddleia, left a patch wild, and joined the Weald to Waves map. It's been wonderful seeing her care so deeply about nature and want to take action at home.”

Amy Isted

“Thank you for delivering an inspiring assembly this morning and for the opportunity to see at first hand the installation of a Pollination Education Station. It was an uplifting morning and demonstrated what we all know, namely that children - even very young ones - are aware of the multiple threats facing our planet and the need for urgent action across the board.”

Richard Nicholls

Rotary Community, Vocational and Youth Committee”

“Born in 1935, I grew up in wartime Britain learning to reuse, repair, sew, and never waste. After losing my husband and moving closer to family, I felt lonely and unsure of my place in the world. Discovering Carrie and Sussex Green Living was a lifeline. Through this wonderful community, I've rediscovered my roots — that there is no such thing as rubbish — and found great joy in reusing, repairing, and helping to protect our world for future generations.”

Rosalind Peters

Horsham Repair Café Volunteer”

“An informative, interactive and immersive experience to change young minds! The children were engrossed in the activities and I’m sure they’ll go home ready to make a change.”

—

DEPUTY HEAD, BILLINGSHURST
PRIMARY ACADEMY

In the pupils words:

eco **heroes** homes for bugs
Making space for nature
Fun Bees
Pollen  **Helping wildlife**
learning
Making **A** Exciting
Growing food **Difference**

Work with us

Over the next three years, Sussex Green Living will continue to grow our reach, strengthen collaboration and create opportunities for people, schools and businesses to take practical action for the planet. Our updated three-year plan focuses on scaling up what works and doing more of it, together.

Expanding our community network

We will continue to run and grow the Sussex Green Hub in Horsham, home of our Horsham Repair Cafe, refill station and, recycling education and collections. Funding from the National Lottery will support a communications campaign to engage young people and families, with extra activities at the Hub and pop-up events across the community.

Strengthening education and youth engagement

We will continue to deliver assemblies and workshops in 45+ schools, expanding our network of Pollination Education Stations year on year. We will also seek funding to create a new Youth Engagement role to coordinate projects, and events specifically for young environmental leaders.





Innovating for a circular future

We will launch the Sussex Laundry Challenge, in partnership with PlanetCare, recruiting volunteers to promote washing machine filters that capture microplastics before they reach our waterways. We will also increase our support for pop-up refill services and grow attendance at the Sussex Green Hub while helping others to set up more community hubs across the county.

Partnering with business for change

Through the Green Business Network, we will relaunch a tiered monthly funding scheme, develop new corporate volunteering opportunities and encourage payroll giving. We will continue to offer lunch and learn sessions, talks and volunteering experiences that connect business support with local impact.

Working across Sussex and beyond

We will collaborate with other organisations including Friends of the Earth and the South East Climate Alliance to amplify the call for climate and nature action. Building on the success of the Plant to Plate Festival, we plan to deliver a second, even bigger event celebrating sustainable food, repair, refill and community learning.

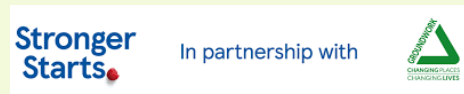
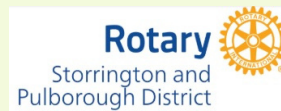
How you can help

Our work depends on collaboration and community support. There are many practical ways you can help us make change happen:

- Fund workshops and school assemblies to bring environmental learning to more pupils across Sussex.
- Sponsor Pollination Education Stations in the community or local schools to create living classrooms that connect people with nature and share action.
- Help fund a Youth Engagement Coordinator to empower young environmental champions across Sussex.
- Support the development of a Library of Things, helping communities borrow instead of buy.
- Be lead sponsor or match fund the next Plant to Plate Festival, bringing together food, learning and community action.
- Make a regular donation to help us grow sustainably, or fundraise in your community to support specific projects and events <https://www.sussexgreenliving.org.uk/donate/>.

Every contribution, financial, practical or shared, helps us build a more sustainable, connected Sussex.

Grant supporters

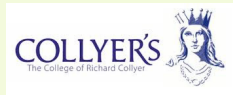


Plus grants from Mid Sussex District Council, various parish councils,
Cobb Charity & sponsorship by many businesses

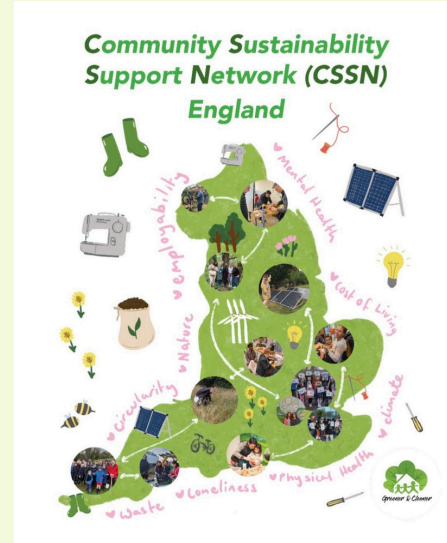
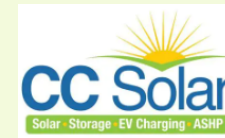
Collaborators



greenwood



UK arm of Climate Reality Project



Plus: Fairtrade Horsham, local environmental groups: BilliGreen, Greening Steyning, Greening Cowfold, Sustainable Southwater, Sustainable Henfield 2030, Go Green Rudgwick, Wild About Warnham, Arundel Green Living and the repair cafes in Sussex.

Friends of the Earth – Sussex Climate and Nature Network. South Downs Learning Network.

And about 15 village magazine publishers covering Horsham District and Mid Sussex and environmental groups throughout Horsham District

Media Outreach

Working with media partners we reach households across Sussex and Surrey.



10k



County Times

weekly ½ page

500k

AAH
ALL ABOUT HORSHAM MAGAZINE

11.5k

**SUSSEX
LOCAL**
Magazine

57k



in Surrey & Sussex

260k+

RH
UNCOVERED
LIVE LOCAL LOVE LOCAL

In Surrey & Sussex

154k

Plus other village magazines, social media (FB, IG & LI) and our monthly newsletter to over 2,700 people.

Thank you for your interest and support

Carrie Cort

Founder

Sussex Green Living

Charity No. 1189569

Web www.sussexgreenliving.org.uk

Email cort@sussexgreenliving.org.uk

