

2025



# Purpose & Impact

Charity No. 1189569

# Thank you

*"Thank you to our generous trusts, foundations, corporate collaborators, community partners and volunteers for your vital support. Your contributions enable our environmental education charity to reach communities, inspire learning, and empower people to care for the natural world. We couldn't achieve this impact without you".*

*From Carrie and our Board of Trustees*

# Our purpose

To build a network of people working together to promote lifestyle changes that reduce resource consumption, the carbon footprint and negative ecological impact on the planet.

# 3 Pillars of Activity



# Who are we?

**We are 2 FTE Employees**

**We are 1 Contracted Grant Writer**

**We are 7 Trustees**

**We are the Horsham Repair Cafe!**

**We have a team of 7 environmental education contractors**

**We are the SGL Horsham District Wombles with recycling volunteers in 20 villages/towns**

**We are a team of about 100 volunteers**

**We have worked with 42 corporate partners in 2025**

**We have received funding from 21 trusts/foundations/councils in 2025**



# Volunteers in Action

“I volunteer with Sussex Green Living co-ordinating recycling drop-off points across 20 villages and towns because I am so upset about the amount of waste and what it is doing to our world. I want to educate people to think about where the waste goes when they discard it and maybe to choose better options rather than buying items that are plastic or hard to recycle”



JOY CARTER RECEIVED THE  
OUTSTANDING CONTRIBUTION  
AWARD AT THE HORSHAM  
VOLUNTEER AWARDS 2025

# 2025 at a glance

**3393**

Pupils engaged

**44**

Schools visited

**8**

Talks & workshops

**19**

Pollination Education Stations

**2098**

Visitors to the hub

**321**

Items repaired

**42**

Companies worked with

**40**

Eco-Float community events

Social media comms FB, IG & LI

**846**

Bottles refilled \*

**836**

Plant to Plate Festival attendees

**12**

Monthly newsletters

**Thousands!**

Village magazines articles

**4225kg**

Recycled items

**11**

Sussex Green Hubs

**52**

Weekly WSCT columns



\*Plus 180 dry concentrated cleaning products - replacing lots of plastic bottles!



SUSSEX GREEN HUB- LAST SATURDAY OF EVERY MONTH IN HORSHAM



NEW 2025 DRY FOOD REFILL SERVICE IN CHANCTONBURY LEISURE CENTRE, STORRINGTON

# Plant to Plate Festival

2025 was the first year we ran this event thanks to a generous individual donor, local businesses, a team of volunteers, plus the support of Horsham District Council. Over 800 people were drawn to the Plant to Plate Festival in Horsham Town Centre for a day of family fun focused on healthier food for healthy people and healthy planet.

The event centred on themes of eating healthy real food, avoiding food waste, buying local produce, growing your own food, soil health, protecting pollinators and the importance of composting.

“This was a fantastic event with lots of ideas for living a sustainable life. Really good atmosphere and great energy. It was a very inspiring event”

NICKY, HORSHAM



# Plant to Plate Festival

(4 locations)



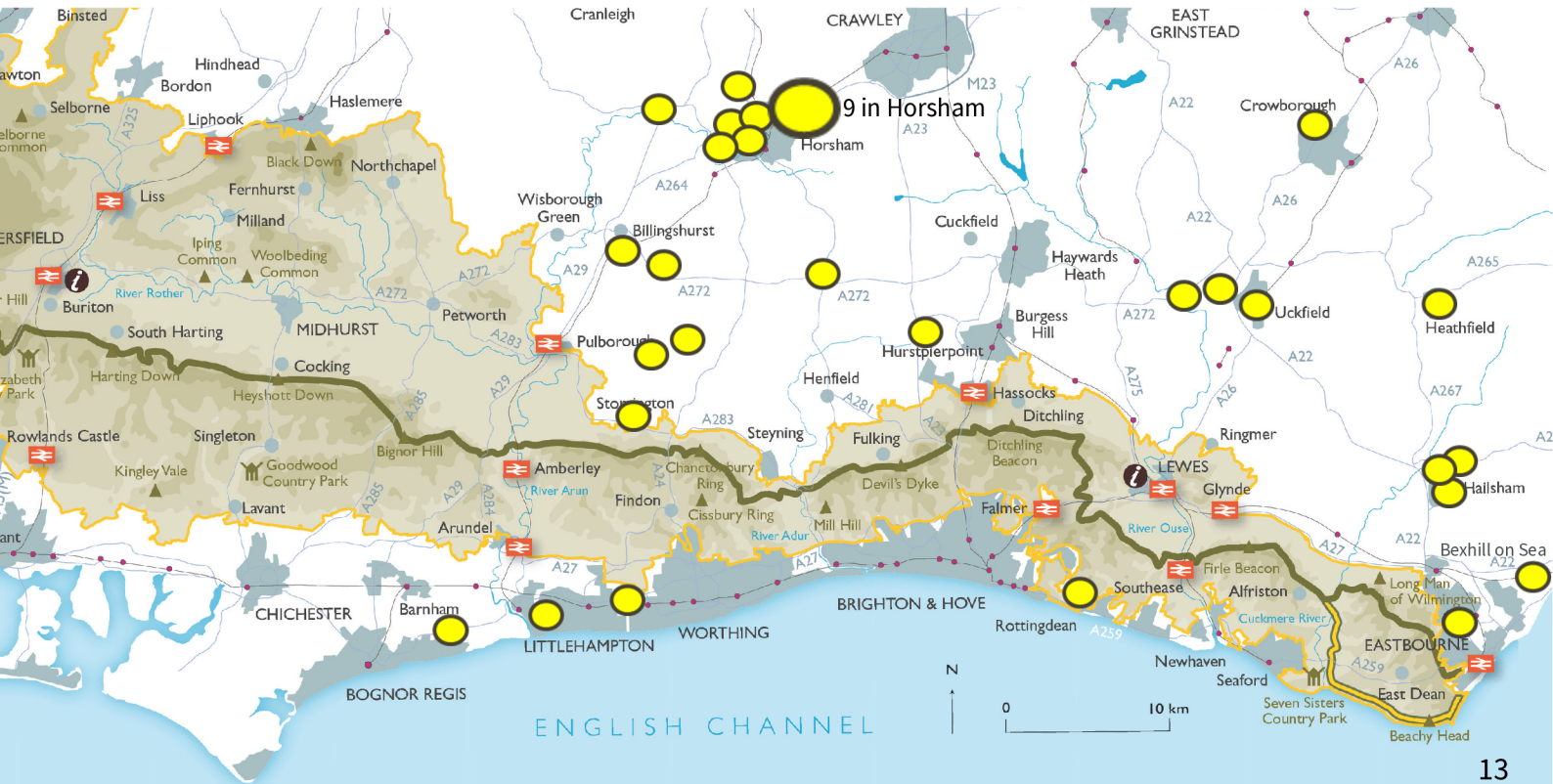
We're reaching out to local businesses who care about our community, our environment, and the future of good, sustainable food. Your support can help nurture the people, places, and food systems that keep Sussex thriving. If you'd like to be part of something meaningful and locally rooted, we'd love to talk.





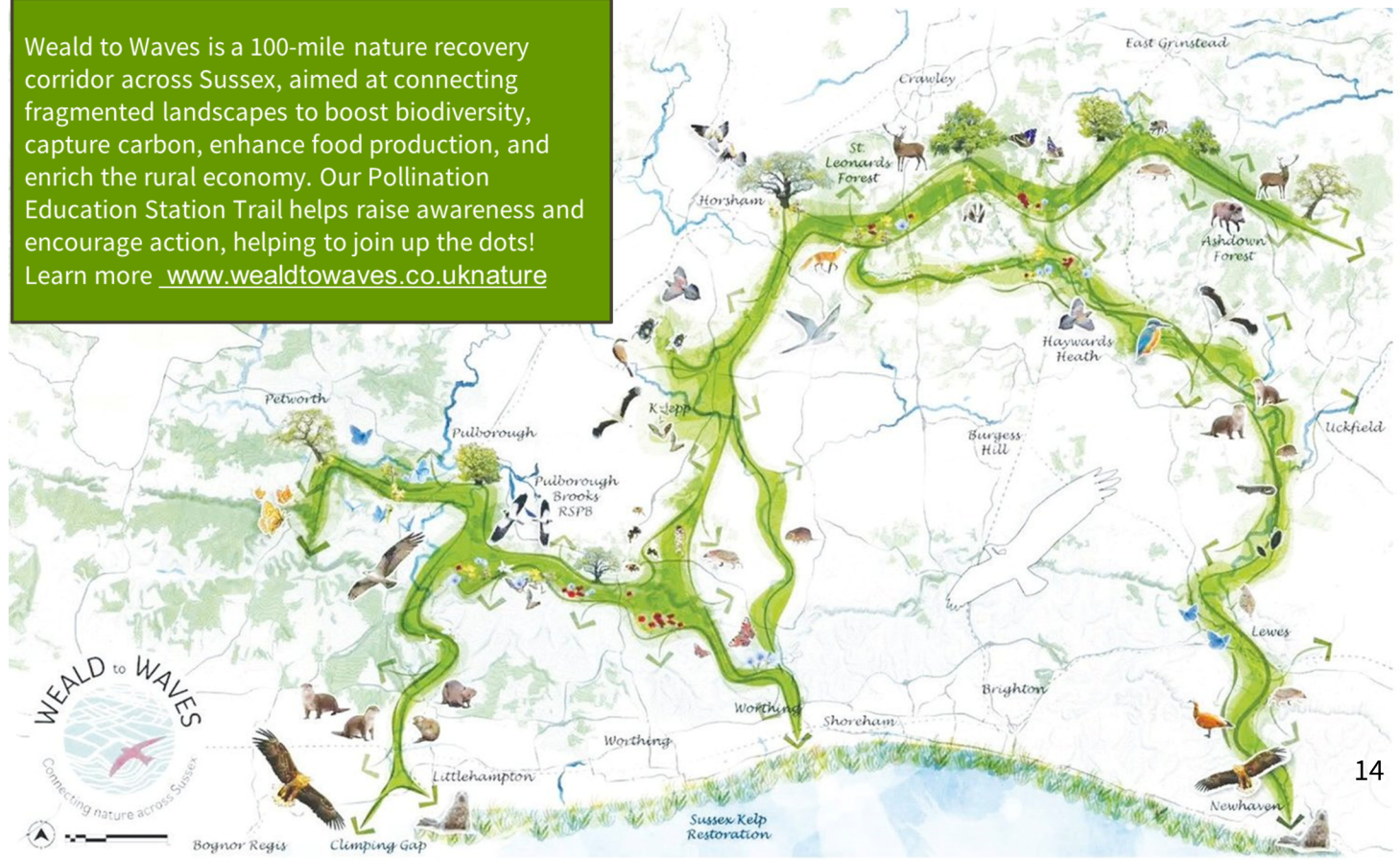
# Restoring Biodiversity

Pollination Education Station Trail across East and West Sussex showing the South Downs National Park

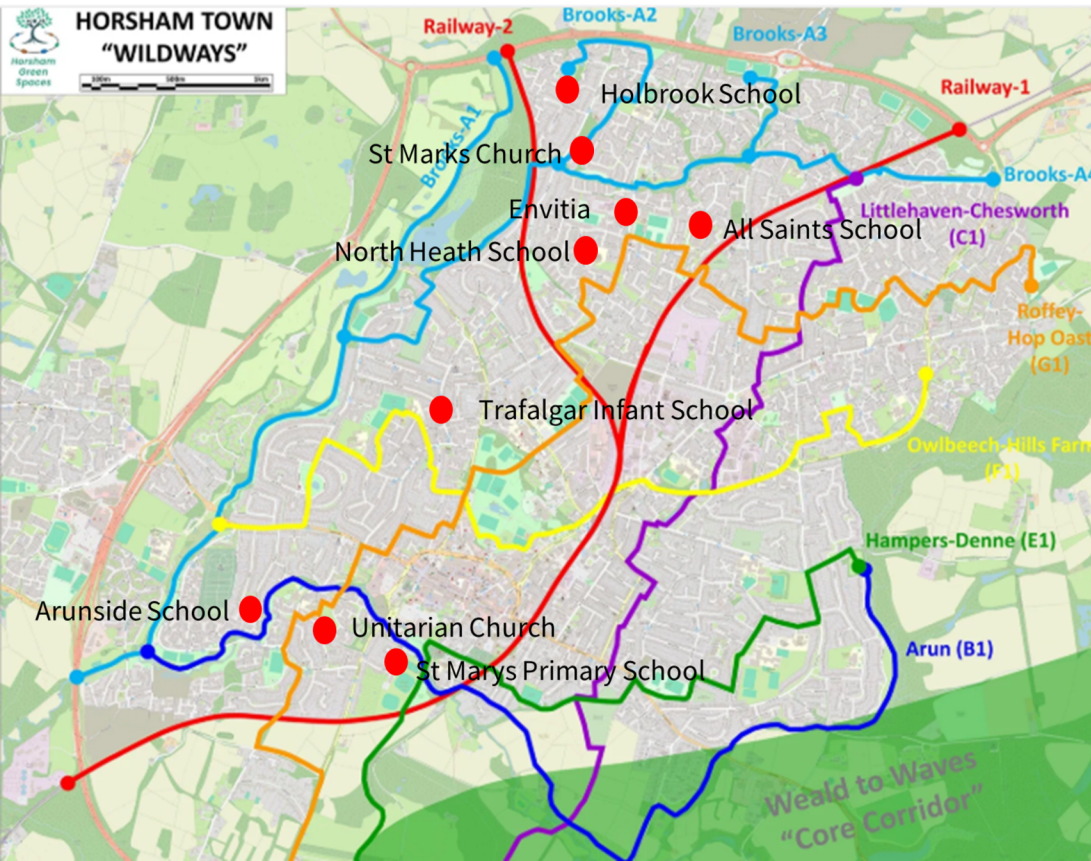


# Restoring Biodiversity

Weald to Waves is a 100-mile nature recovery corridor across Sussex, aimed at connecting fragmented landscapes to boost biodiversity, capture carbon, enhance food production, and enrich the rural economy. Our Pollination Education Station Trail helps raise awareness and encourage action, helping to join up the dots! Learn more [www.wealdtowaves.co.uk/nature](http://www.wealdtowaves.co.uk/nature)



# Restoring Biodiversity



● Shows the locations of our Pollination Education Stations on the Horsham Green Spaces "wildways," which connect green spaces across the Horsham town to create a Nature Recovery Network. This project is part of the larger Wilder Horsham District initiative and Weald to Waves.

[www.horshamgreenspaces.org](http://www.horshamgreenspaces.org)



STORRINGTON PRIMARY SCHOOL. COUNCILLOR CLAUDIA FISHER (DISTRICT AND PARISH COUNCILLOR) AND RICHARD NICHOLS FROM STORRINGTON & PULBOROUGH DISTRICT ROTARY ATTENDED THE ASSEMBLY AND MATCH FUNDED A POLLINATION EDUCATION STATION WHICH WE INSTALLED ON THE SAME DAY AS THE FUNDED ASSEMBLY.

# The ripple effect

## Repair Cafes

As the recycling network grew, other communities followed suit. Repair Cafes began to spring up in nearby villages, many guided in their early stages by Sussex Green Living.

## Horsham Repair Cafe opened

Launched the first ever West Sussex Repair Cafe at the Quaker Meeting House.

## 1st hard-to-recycle village drop-off points created

Started in Billingshurst, Coolham and Horsham.

## More hard-to-recycle village drop-off points created

Thanks to more volunteers signing up to work with us.

## Cue Eco-Float

We purchased and retrofitted a 1974 milk float as an outdoor classroom and event stall.

## Sussex Green Hub

Opened the Sussex Green Hub in Horsham combining refills, recycling, repairs in collaboration with Transition Horsham, Horsham Eco Churches & Horsham Community Fridge.

## More local environmental groups formed

Recycling points became the starting point for new local environmental groups across many villages and towns.

## Became a charity

## Launched GBN & PES

Green Business Network and Pollination Education Station Trail

## Mini Green Hubs open

We supported the launch of Arundel Green Hub, Amberley Eco Hub and Partridge Green Repair Cafe. Plus set up a new cleaning product bottle refill service in Chanctonbury Leisure Centre, Storrington. 17

## Dry food Refill Service created

We helped Chanctonbury Leisure centre expand its offer with the help of a WSSC grant.

## Library of Things

Secured a National Lottery Grant to expand engagement and in 2026 carry out a feasibility study for a Library of Things.

2019

2020

2021

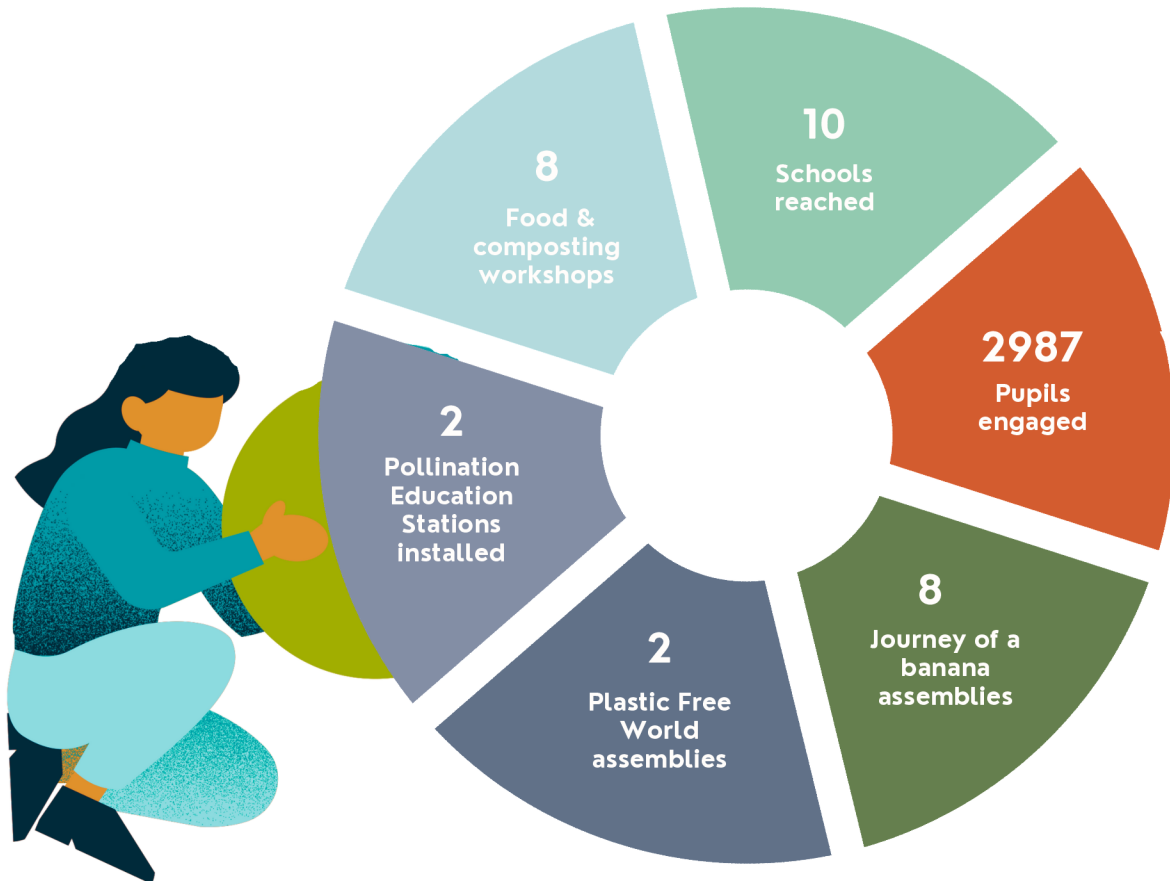
2024

2023

2025

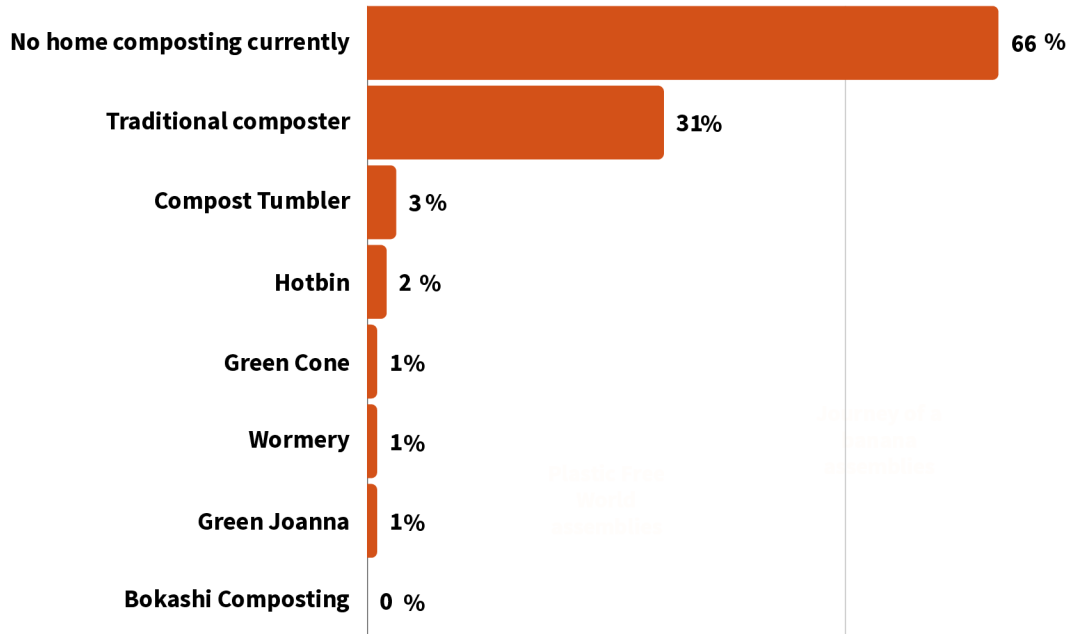
2026

# Wates Developments



# Wates Developments

In spring 2026, mandatory separate food waste collections will be introduced by every local council in England. Our aim is to encourage waste reduction and promote home composting of unavoidable food waste. Prior to delivering the Wates funded sessions we asked 8 schools to survey their families. 288 “How do you compost at home?” surveys were completed with these results:



# Barratt Homes



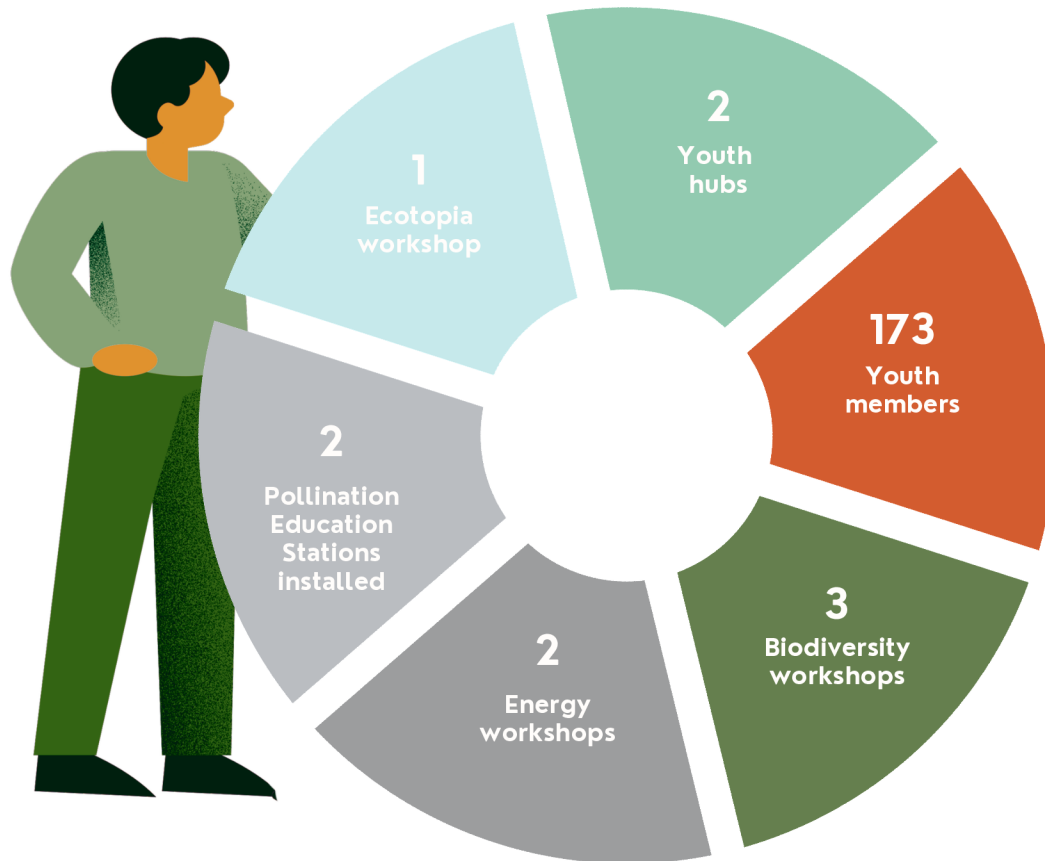


COMMUNITY POLLINATION EDUCATION STATION INSTALLATION  
ON BARRATT HOMES DEVELOPMENT



GARDENING FOR PEOPLE AND WILDLIFE  
WORKSHOP WITH RESIDENTS

# Morgan Sindall Construction



# Morgan Sindall Construction



ECOLOGY WORKSHOP AND POLLINATION EDUCATION STATION  
INSTALLATION AT THE NEW JOFF YOUTH HUB IN PEACEHAVEN

# Morgan Sindall Construction



BIODIVERSITY SESSION WITH HEATHFIELD YOUTH HUB MEMBERS IN MILLENNIUM GREEN, ANCIENT WOODLAND



WORKING WITH YOUNG CHANGEMAKERS

# 2026 and beyond

Assemblies/  
workshops  
in 45 schools  
yearly

Increase  
reach by  
improving  
website

Follow on  
food event  
from Plant  
to Plate

More Pop-  
up Refill  
services

Deliver  
engaging  
outreach  
events with  
Eco-Float

20+  
Pollination  
Education  
Stations  
yearly

Sustainable  
Food

Feasibility  
study for  
Library of  
Things

New Sussex  
Laundry  
Challenge

Create new  
Youth  
Engagement  
post

Restoring  
biodiversity

Conserving  
resources

Increasing  
young visitors at  
hub and other  
events

Expand our  
reach with  
village  
magazines

Continue  
existing  
repair, refill  
& recycling

Expand our  
Green  
Business  
Network

# What they say



As a mum who volunteers with Sussex Green Living, I loved seeing the impact their pollinator talk had on my five-year-old. She came home determined to help butterflies and insisted we add our garden to the wildlife map. We planted a buddleia, left a patch wild, and joined the Weald to Waves map. It's been wonderful seeing her care so deeply about nature and want to take action at home.

Amy Isted

Thank you for delivering an inspiring assembly this morning and for the opportunity to see at first hand the installation of a Pollination Education Station. It was an uplifting morning and demonstrated what we all know, namely that children - even very young ones - are aware of the multiple threats facing our planet and the need for urgent action across the board.


Richard Nicholls

Rotary Community, Vocational and Youth Committee

Born in 1935, I grew up in wartime Britain learning to reuse, repair, sew, and never waste. After losing my husband and moving closer to family, I felt lonely and unsure of my place in the world. Discovering Carrie and Sussex Green Living was a lifeline. Through this wonderful community, I've rediscovered my roots — that there is no such thing as rubbish — and found great joy in reusing, repairing, and helping to protect our world for future generations.

Rosalind Peters

Horsham Repair Café Volunteer

A woman in a white shirt is speaking to a group of children in school uniforms outdoors. The children are wearing green sweaters and dark trousers or skirts. The background is a grassy area with trees.

“An informative, interactive and immersive experience to change young minds! The children were engrossed in the activities and I’m sure they’ll go home ready to make a change.”

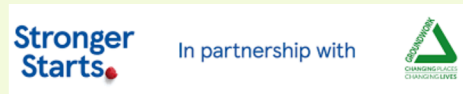
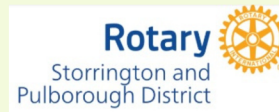
—

DEPUTY HEAD, BILLINGSHURST  
PRIMARY ACADEMY

# In the pupils words:

eco **heroes** homes for bugs  
Making space for nature  
Fun Bees  
**Pollen**  **Helping wildlife**  
learning  
Making **A** Exciting  
Growing food **Difference**

# Grant supporters



Plus grants from Mid Sussex District Council, various parish councils, Cobb Charity & sponsorship by many businesses



# Media Outreach

Working with media partners we reach households across Sussex and Surrey.



10k



weekly ½ page

500k

**AAH**

ALL ABOUT HORSHAM MAGAZINE

11.5k

**SUSSEX LOCAL**  
Magazine

57k



in Surrey & Sussex

260k+

**RH**

UNCOVERED

LIVE LOCAL. LOVE LOCAL.

In Surrey & Sussex

154k

Plus other village magazines, social media (FB, IG & LI) and our monthly newsletter to over 2,700 people.

***Thank you for your interest and support***

Carrie Cort

Founder

Sussex Green Living

Charity No. 1189569

Web [www.sussexgreenliving.org.uk](http://www.sussexgreenliving.org.uk)

Email [cort@sussexgreenliving.org.uk](mailto:cort@sussexgreenliving.org.uk)

